

文政六年

沙州人

未三月

定指印帳

市尔尼村

改人

未中每卷九叶

Faint, illegible handwritten text or bleed-through across the page.

未中一每之空九可

石著

尾列振山海玉舟

金

字

海

石

長

一

分

右

德

子

之

原

元

五

序

合

信

如

册
子
之
令
中
书
友
有
要
平
早
函
得
元
名
中
推
善
善
善
善

Handwritten text in a cursive script, possibly a signature or a name, located on the right side of the document. The text is written vertically and includes a circular stamp at the bottom.

二一廿四九

御公家様

七
元七

會事人

合

八

五

百

十

半

百

百

文

八

百

百

文

百

百

田子

あつた
あつた
あつた

あつた

あつた

あつた

あつた

あつた

あつた

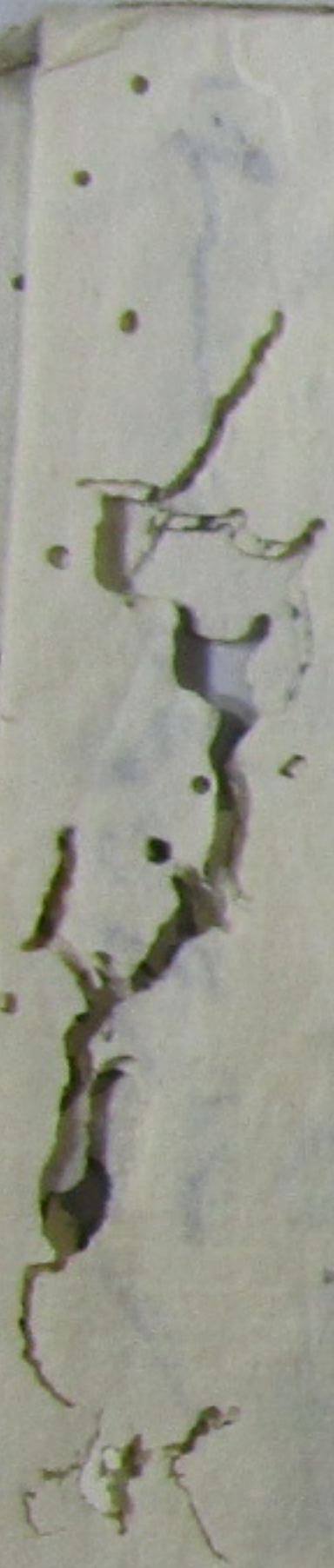
東平中野の町

Faint, illegible handwritten text, possibly bleed-through from the reverse side of the page.



八

Handwritten Chinese characters in cursive script, likely a list or record. The characters are arranged in a single horizontal line across the page. The script is highly stylized and difficult to decipher precisely, but appears to contain approximately 20 characters.



Faint, illegible handwritten text in blue ink, possibly bleed-through from the reverse side of the paper.

Handwritten text in black ink, including a vertical column of characters on the left and a larger, more complex calligraphic signature or seal on the right.

Handwritten characters in black ink, possibly a date or a specific reference.

Handwritten characters in black ink, continuing the text from the adjacent page on the right.

Handwritten vertical text on the right edge of the page, possibly a signature or a date.

丁原

御公... 御系

有

金... 人

花... 新... 古...

Main body of handwritten text in cursive script, arranged in a horizontal line across the page.

Vertical text on the left margin, possibly a title or page number, written in cursive.

Main body of cursive Chinese characters, likely a list or a continuous text, spanning across the page.

Vertical text on the right margin, possibly a continuation or a separate note.

Handwritten Chinese characters in cursive script, including the characters 神 (Shen) and 清 (Qing), and a circular seal impression at the bottom.

Faint, ghostly impressions of Chinese characters, likely bleed-through from the reverse side of the page.

